



Dokkyo Medical University



School of Medicine

School of Nursing

DMU Hospital

DMU Saitama Medical Center

DMU Nikko Medical Center

**Nursing School
Affiliated to DMU**

**Misato Nursing School
Affiliated to DMU**



<Hippocrates tree>

Founding Spirit

Human development through learning

Founding Philosophy

- Nurture physicians and nurses with a rich sense of humanity
- Foster an educational policy focusing on the development of abilities
- Fulfill the role of a medical center for the local community
- Commit to medical and nursing research based on international exchange

Number of students / faculty / staff (as of May 1, 2023)

Graduate School of Medicine (134 / Total: 1,703)
 Graduate School of Nursing (22 / Total: 72)
 School of Medicine (743 / Total: 4,719)
 School of Nursing (405 / Total: 1,341)
 Graduate Program of Midwifery (10 / Total: 106)
 Nursing School Affiliated to DMU (246 / Total: 4,444)
 Misato Nursing School Affiliated to DMU (241 / Total: 328)
 Academic Faculty Members (1,111)
 Administrative Workers (4,217)

INDEX

Founding Spirit / Philosophy /	
Number of students / faculty / staff	1
Message from the President	2
Organization chart (Dokkyo Medical University) / Policies	3
Campus Map	5
History	6
School of Medicine /	
Nursing School Affiliated to Dokkyo Medical University	7
School of Nursing /	
Misato Nursing School Affiliated to Dokkyo Medical University	8
Dokkyo Medical University Hospital	9
Dokkyo Medical University Saitama Medical Center	13
Dokkyo Medical University Nikko Medical Center	14
Comprehensive Research Facilities for Advanced Medical Science	15
Premedical Sciences /	
Center for Radiation Research and Management	17
Support Centers	18
International Exchange	19
Inbound	20
Outbound	
School of Medicine	22
School of Nursing / DMU Hospital	23
Medical Cooperation	24
Online	
School of Medicine	25
School of Nursing	26

Message from the President

Ken-ichiro Yoshida, MD, PhD



Dokkyo Gakuen (Dokkyo Group of Academic Institutions), to which Dokkyo Medical University (DMU) belongs, has its roots in Doitsu-gaku Kyokai Gakko (the German Association School), which was established in 1883 and has a history of 140 years, making it one of the oldest and most traditional schools in Japan. DMU was established in 1973 in Mibu town, Tochigi prefecture, with the desire to provide medical education that could respond to advances in medicine and changes in society. In April of the following year, the Affiliated Advanced Nursing School (currently, the Nursing School Affiliated to DMU) was established, and in July, the university hospital started medical services. In 1984, Koshigaya Hospital (currently, Saitama Medical Center) was established in Saitama prefecture, and in 2006, Nikko Medical Center was established in Fujihara town (currently, Nikko city), Tochigi prefecture, where the Kinugawa Hot Springs are located, both making significant contributions to community medicine. Furthermore, the School of Nursing was established in 2007, the Graduate Program of Midwifery in 2011, and the Graduate School of Nursing (Master's Course in 2012, Doctoral Course in 2023), bringing together the two wheels of the medical university, the School of Medicine and the School of Nursing. Subsequently, the Saitama Campus was enhanced, with the opening of the Misato Nursing School Affiliated to DMU (April 2015), and with the acquisition of 8,264 square meters of land adjacent to Koshigaya Hospital, facilitating an increase of 200 beds and a new 411-bed surgical ward with 22 operating rooms. Although our university is an up-and-coming medical school, it has been steadily fulfilling its significance as well as contributing to community medicine at the three hospitals, under the philosophy of "fostering physicians and nurses with rich humanity" since its establishment, based on tradition. To date, the university has produced more than 4,700 physicians and 5,500 nurses.

DMU Hospital boasts an impressive 1,195 beds, while the Saitama Medical Center has 928

beds, and the Nikko Medical Center has 199 beds. With its sizeable bed capacity, the group of hospitals ranks among the largest in Japan. Notably, in recent years, DMU Hospital has established the Sports Medicine Center and the Reproductive Medicine Center. Also, it is the only hospital in the prefecture with a helicopter base that plays an active role in enabling doctors and nurses to fly to emergency sites quickly. Saitama Medical Center has established the Minimally Invasive Treatment Center, the Integrated Patient Support Center, and other facilities, and has increased its presence as a core hospital in the region with additional beds. Nikko Medical Center was relocated and newly built in Moritomo, Nikko city in January 2023. As a fundamental hospital in the international tourist city of Nikko, it provides seamless medical services from acute care to rehabilitation in cooperation with a regional medical cooperation promotion corporation.

On the educational front, the university has been working on reforming entrance examinations and upgrading education since FY2020. It was selected by the Ministry of Education, Culture, Sports, Science and Technology (MEXT) to participate in the "University Reform Project for Optimization of Learning and Infinite Learning Using Integrated Data Management and AI Analysis." Our university is the only private medical school outside the Tokyo metropolitan area to be selected for this program. We will continue to work with MEXT to create a system that can provide attentive learning support suitable for each individual student.

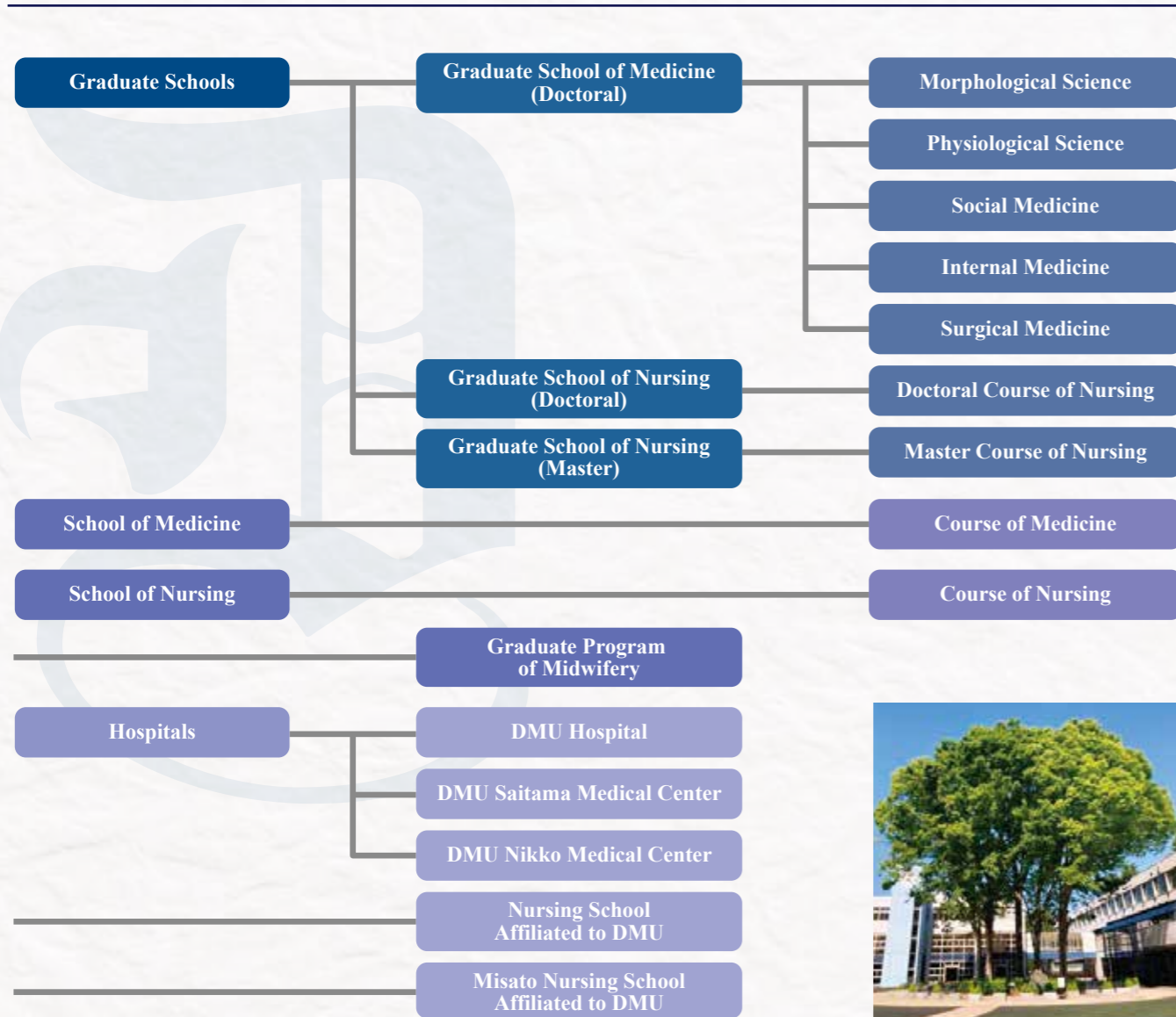
FY2023 marks the commemorative 50th anniversary of the founding of the university. In order for our university to take a new step toward further growth and development, we are determined to innovate while not forgetting what has been learned and cultivated over the past 50 years. We will continue to fulfill our roles as a medical university to "foster medical professionals with advanced education and professional skills", to "advance research as a source of knowledge", and to "serve as a medical center that provides the latest medical care to

the local community." Specifically, as a part of educational reforms, we will work on connecting high schools-universities and making education smarter. In the area of research, with the establishment of the Comprehensive Research Facilities for Advanced Medical Science, we aim to strengthen our research support division by promoting research that creates new value from large volumes of data through industry-academia collaboration and support the creation of ventures. As for the reform of our medical services, we will accelerate the smart transformation of the three hospitals. We make an effort to improve the working environment by introducing a four-week on, eight-day off system for the entire university, while also implementing specific action training for nurses to enhance the efficiency of medical care. We will build a system that allows our university and society, such as companies and the local government, to demonstrate new concepts. Regarding local healthcare, as a first step, we will establish a "Center for Collaborative Creation and Collective Innovation" to build a symbiosis between faculties of the university and the local community. We aim to create a system that seamlessly conducts everything from seed discovery to commercialization from a position standing in the middle. Furthermore, in commemoration of our 50th anniversary, we hope to realize various projects that include the ongoing expansion of the School of Nursing building, the construction of the Saitama Medical Center Administration Building, and the construction of a Comprehensive Education and Research Building (tentative name) within the main campus.

We will continue our efforts to further contribute to community medicine under any circumstances, and we sincerely would like to ask for your continued guidance and encouragement.

April 2023

Organization Chart of Dokkyo Medical University (DMU)



Policies

Graduate School of Medicine

Diploma Policy
Curriculum Policy
Admission Policy
Assessment Policy



Graduate School of Nursing

Diploma Policy
Curriculum Policy
Admission Policy
Assessment Policy



School of Medicine

Diploma Policy
Competency Milestone
Curriculum Policy
Admission Policy
Assessment Policy



School of Nursing

Diploma Policy
Curriculum Policy
Admission Policy
Assessment Policy



Preclinical Medicine / School of Medicine

Department of Anatomy	Department of Microbiology
Department of Physiology	Department of Molecular and Cell Biology
Department of Biochemistry	Department of Public Health
Department of Pharmacology and Toxicology	Department of Legal Medicine
Department of Pathology	

Clinical Medicine / School of Medicine

Department of Cardiovascular Medicine	Department of Hepato-Biliary-Pancreatic Surgery
Department of Gastroenterology	Department of Cardiac and Vascular Surgery
Department of Hematology and Oncology	Department of General Thoracic Surgery
Department of Nephrology and Hypertension	Department of Neurosurgery
Department of Neurology	Department of Orthopedic Surgery
Department of Endocrinology and Metabolism	Department of Urology
Department of Pulmonary Medicine and Clinical Immunology	Department of Ophthalmology
Department of Rheumatology	Department of Otorhinolaryngology, Head and Neck Surgery
Department of Psychiatry	Department of Obstetrics and Gynecology
Department of Dermatology	Department of Plastic and Reconstructive Surgery
Department of Radiology	Department of Anesthesiology
Department of Genetic Diagnosis and Laboratory Medicine	Department of Emergency and Critical Care Medicine
Department of Pediatrics	Department of Oral and Maxillofacial Surgery
Department of Diagnostic and Generalist Medicine	Department of Rehabilitation
Department of Upper Gastrointestinal Surgery	Department of Diagnostic Pathology

School of Nursing

Medical Science of Nursing	Adult Nursing (Acute)
Clinical Pathophysiology of Nursing	Adult Nursing (Chronic)
Nursing Science for Host Defense Mechanism and Infection Control	Gerontological Nursing
Nursing Administration	Mental Health Nursing
Fundamental Nursing	Global Public Health Nursing
Child Health Nursing	Home Care Nursing
Women's Health Nursing	

Premedical Sciences

Department of Languages and Humanities	Department of Fundamental Education
--	-------------------------------------

Comprehensive Research Facilities for Advanced Medical Science

Research Center for Advanced Medical Science	Research Center for Laboratory Animals
Center for Research Collaboration and Support	

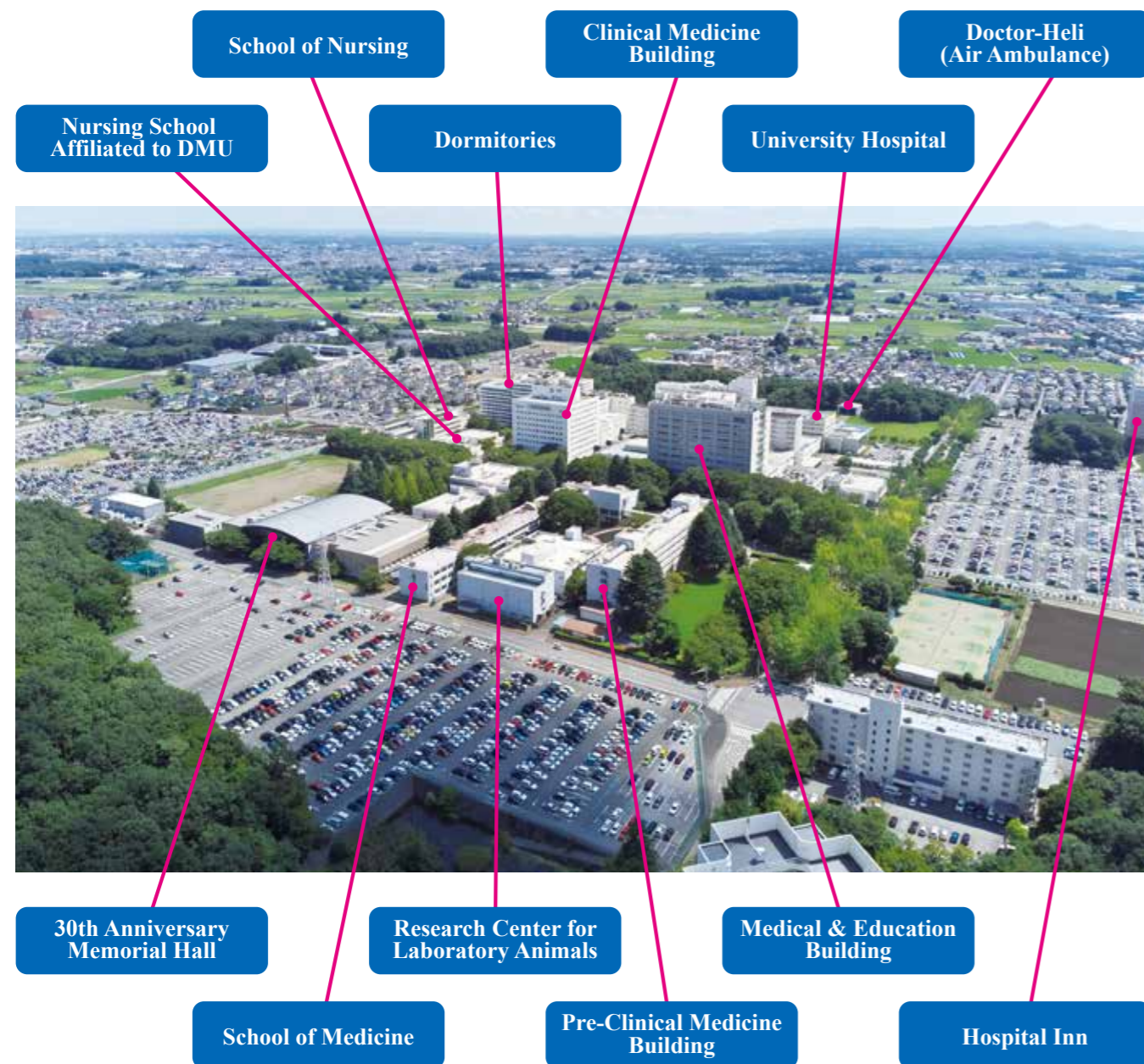
Centers

Center for Radiation Research and Management	Center for Information and Communication Technology
Center for Education Support	Health Services Center for Students and Staff
Center for International Cooperation	

CAMPUS MAP

Our university is located near Omochanomachi Station on the Tobu-Utsunomiya Line. The campus covers an area of nearly 300,000 square meters and is located on a flat and lush green area. On the campus are the School of Medicine, the School of Nursing, and the Affiliated Nursing School as well as the DMU Hospital. The campus also has facilities necessary for student life, including a library, student cafeteria, auditorium, gymnasium, and practice areas, and is surrounded by abundant natural greenery, with cherry and ginkgo trees lining the campus, showing the colors

of the four seasons. The all-electric dormitories Sakura and Ichou, completed in September of 2016 on campus, are used primarily by female nursing students, with other faculty and staff (500 rooms in total). Parking is available for approximately 3,000 cars for faculty, staff, and students, and 1,300 cars for outpatients. Other very distinctive facilities on campus include a heliport for a Doctor-Heli and a multi-purpose function, expandable seismic-proof Medical & Education Building (12 floors) completed in April of 2017.



History

The history of Dokkyo Gakuen (Dokkyo Group of Academic Institutions) started with the birth of the Doitsu-gaku Kyokai (German Studies Association), which was founded in 1881 to promote Western and, in particular, German studies in Japan. In 1883, the Association founded the Doitsu-gaku Kyokai Gakko (German Studies Association School), which aimed to develop capable individuals.

- 1881 ● The Doitsu-gaku Kyokai (German Studies Association) was established by intellectual leaders such as Amane Nishi, Taro Katsura and Hiroyuki Kato for the purpose of the study of German culture.
- 1883 ● The Doitsu-gaku Kyokai Gakko (German Studies Association School) was founded, and Amane Nishi became the first principal of the school (in 1879, he was made the head of the Tokyo Academy).
- 1887 ● Taro Katsura became the second principal of the school (in 1901, he became a prime minister).
- 1890 ● Hiroyuki Kato (President of the Imperial University) became the third principal of the school.
- 1947 ● The Doitsu-gaku Kyokai changed its name to Dokkyo Gakuen.
- 1948 ● The Junior and Senior High Schools were founded.
- 1952 ● Teiyu Amano (former education minister) became the 13th principal of Dokkyo Junior and Senior High Schools.
- 1964 ● Dokkyo University was founded in Soka city. Teiyu Amano became the first president of Dokkyo University.
- 1967 ● Minato Seki became a chancellor.
- 1973 ● Dokkyo Medical University was founded in Mibu town.
- 1974 ● Nursing School Affiliated to Dokkyo Medical University was founded. Dokkyo Medical University Hospital was opened.
- 1980 ● Dokkyo Saitama Senior High School was founded in Koshigaya city.
- 1984 ● Dokkyo Medical University Koshigaya Hospital (currently Saitama Medical Center) was opened.
- 1987 ● Himeji Dokkyo University was founded in Himeji city.
- 2001 ● Dokkyo Saitama Junior High School was founded in Koshigaya city.
- 2006 ● Dokkyo Medical University Nikko Medical Center was opened.
- 2015 ● Misato Nursing School Affiliated to Dokkyo Medical University was founded in Misato city.
- 2023 ● DMU Nikko Medical Center was relocated and newly built in Moritomo, Nikko city.



School of Medicine



Six Elements for Developing Medical Professionals

1. The curriculum focuses on the development of physicians with a rich sense of humanity and personal development

We are developing a "6-year integrated wedge-shaped curriculum" to address the evolving demands of modern medicine, medical care, and society as a whole.

2. Post-graduation career paths that fulfill "what I want to be"

After graduation, physicians can choose to pursue advanced training through residency programs. In addition, we have a graduate school for further study of medical specialties at a higher level of dimension.

3. Overseas training in 3 locations, academic exchange with 18 facilities in 10 countries

We provide an environment where students can experience global culture and international exchange while training abroad and welcoming international students to our program.

4. No. 1 in the North Kanto region and No. 12 in the nation in terms of the number of patients treated across a wide range of medical cases

Our three hospitals have a total of 2,322 beds, making them among the largest in the nation.

Each hospital is equipped with the latest medical facilities, functioning as a clinical training hospital as well as a facility that provides state-of-the-art medical care to local residents.

5. Education by experienced instructors

Every student receives meticulous guidance from experienced professionals across diverse fields.

6. A learning environment that connects students, faculty, and staff

Attentive guidance is provided by grade-level homeroom teachers. Engaging in club activities is a pivotal aspect of our program, as it fosters a sense of camaraderie and strengthens the bonds among students.



School of Nursing

The School of Nursing, opened in April 2007 in Mibu town, the birthplace of Japan's first nurses, where nine untrained women were hired to nurse wounded soldiers during the Boshin War in 1868. The school celebrated its 15th anniversary in 2022. Looking ahead to the next 10 or 20 years, the school aims to fulfill its founding spirit of "fostering nurses who are widely trusted by the society, including patients, their families, and medical professionals".



School of Nursing



Now that the infection rate of Covid-19 has decreased, we take all possible measures to prevent infection such as wearing masks and washing hands during on-campus exercises and practical training. The photos show scenes from the Acute Nursing Practicum and the Maternal Nursing Practicum.

In our classes, we have an educational system that utilizes tablet terminals. The system is designed to enable learning through interactive communication between students and faculty members, such as online group discussions. In addition, the learning environment includes the university hospital where you can learn about cutting-edge medical care, a library with the largest collection of medical books in the prefecture, a cafeteria where students can have lunch at a wallet-friendly price, and clean and inexpensive student dormitories.

Nursing School Affiliated to Dokkyo Medical University



The nursing school was founded in 1974 to train nurses to work at DMU Hospital, which opened in the same year. To date, the total number of graduates has reached 4,444, and they have made significant contributions in various roles within the healthcare industry not only at three hospitals of DMU (DMU Hospital, Saitama Medical Center, and Nikko Medical Center) but also nationwide enabling them to make a positive difference to healthcare.

The school prioritizes education that cultivates students' "independent learning ability" by fostering their curiosity not only in nursing and medicine but also in various academic fields. This approach broadens their cultural perspectives, encourages critical thinking, and enables them to tackle problems autonomously. Furthermore, through collaboration with faculty and clinical experts from both the School of Medicine and the School of Nursing, we continuously enhance our educational offerings to provide engaging and appealing classes.

Misato Nursing School Affiliated to Dokkyo Medical University

This school is the newest in the DMU group, having opened in Misato city, Saitama prefecture in 2015.

As a major feature of its education, the school incorporates project-based learning, where students acquire the ability to discover and solve problems on their own, in other words, an attitude of independent learning. While in group learning, students learn the importance of cooperation and collaboration and build trusting relationships with their peers through discussions that expose them to diverse values.

Practical training, through which students grow greatly, is conducted at the DMU Saitama Medical Center and other community-based facilities in and outside the city such as the Visiting Nursing Station in Misato city. The training offers students time to think and reflect on their own experiences so that they can practice nursing in a creative way.



Dokkyo Medical University Hospital

Embracing Nature: A Hospital-like Haven amidst a Forest

Mibu town is located in the south-central part of Tochigi prefecture. Dokkyo Medical University Hospital is located in the center of the town and surrounded by lush greenery.

With a patient-centric approach to environmental enhancements, our hospital now blends into the surroundings. Trees with sprawling branches and leaves adorn the spacious grounds, creating a serene and healing atmosphere.

Just as forests heal people with negative ions, the University Hospital also provides comfort to patients and their families not only with medical technology but also with warm compassion and smiles.

“The hospital in the forest”, a Hospital-like Haven amidst the Forest gently envelops visitors similar to a breeze with sunlight filtering through the trees.

Philosophy

1. Thoroughness of medical ethics

We respect the dignity and rights of life and do our utmost to serve the sick with high ethical standards.

2. Provision of advanced and high-quality medical care

In order to provide medical care that seeks the highest possible quality, we will strive for continuous self-improvement from the patient's point of view and provide high-level knowledge and technology for the benefit of all people.

3. Contribution to the advancement of medical care

We contribute to society by striving for the eradication of illness and searching for truth for the peace and happiness of people, and also by working diligently as a research institute on the path to advanced medical care.

4. Establishment of cooperative medical care

As a hospital with special functions, we will provide advanced and cutting-edge medical care, take pride in being a core medical center for the local community, and build good relationships with other medical institutions in the region to practice comprehensive regional medical care.

5. Cultivation of quality medical personnel

As an educational institution, we will nurture students and faculty members into quality medical professionals who can make a contribution in Japan and abroad. The students and faculty members will be able to perform team medicine to confront illness with a common understanding and grow as members of a high-quality and safe medical team.

Basic Policy

1. Respect for the dignity and rights of life

We respect the dignity and rights of life, and as medical professionals, we will always maintain high ethical standards to ensure the establishment of self and medical ethics.

2. Pursuit of advanced and leading-edge medical care

We will provide advanced and high-quality medical care by adopting the most advanced medical treatment based on our unceasing self-improvement.

3. Pioneering advanced medical care and pursuing the truth

As a research institution, we will pave the way for advanced medical care by actively seeking the truth through the effective utilization of its human resources, facilities, and equipment. It will contribute to the progress of medicine and healthcare by earnestly exploring and accumulating information on the intricate relationship between people and diseases, rooted in a humanistic approach.

4. Promotion of team medicine

We promote collaborative healthcare by fostering the teamwork of multiple professions, showcasing their abilities in order to provide high-quality and safe medical care, and creating a workplace where all employees can take pride in their work.

5. Establishment of community medical care

We take pride in serving as a medical center for the local community, fulfilling specific functions as a hospital, and fostering strong relationships with others.

6. Student education

As a university hospital that is an educational institution, we promote education for medical and nursing students to foster quality medical professionals based on medical ethics.

7. Encouragement of health of local residents and preventive medicine

Through interactions with local residents, we aim to provide them with the knowledge and skills necessary for their health and preventive medicine.





Dokkyo Medical University Hospital

Address : 880 Kitakobayashi, Mibu, Shimotsuga, Tochigi, JAPAN
Phone +81-282-86-1111

Internal Medicine

- Department of Cardiovascular Medicine
- Department of Gastroenterology
- Department of Hematology and Oncology
- Department of Nephrology and Hypertension
- Department of Neurology
- Department of Endocrinology and Metabolism
- Department of Pulmonary Medicine and Clinical Immunology
- Department of Rheumatology
- Department of Psychiatry
- Department of Dermatology
- Department of Radiology
- Department of Pediatrics
- Department of Diagnostic and Generalist Medicine
- Health Examination Center
- Department of Diagnostic Pathology

Surgery

- Department of Upper Gastrointestinal Surgery
- Department of Hepato-Biliary-Pancreatic Surgery
- Division of Pediatric Surgery
- Department of Cardiac and Vascular Surgery
- Department of General Thoracic Surgery
- Department of Neurosurgery
- Department of Orthopedic Surgery
- Department of Urology
- Department of Ophthalmology
- Department of Otorhinolaryngology, Head and Neck Surgery
- Department of Obstetrics and Gynecology
- Department of Plastic, Reconstructive and Aesthetic Surgery
- Department of Oral and Maxillofacial Surgery
- Department of Rehabilitation
- Department of Breast Oncology
- Center for Colorectal Surgery

Others

- Pharmacy Department
- Nursing Department
- Administration Department
- Medical Safety Management Center
- Infection Prevention and Control Center
- Clinical Research Management Center
- Clinical Training Center

- Department of Medical Informatics
- Career Support Center for Women Physicians
- Regional Network and Patient Support Center
- Control Center for Hospital Bed Management
- Management Data Analysis Office
- Nursery for Ailing Children

Departments list link



Central Departments

- Center for Dementia-Related Diseases
- Perinatal Medical Center
- Dokkyo Children's Medical Center Tochigi
- Gastrointestinal Endoscopy Center
- Respiratory Endoscopy Center
- Center of Medical Ultrasonics
- Emergency and Critical Care Center
- PET Center
- Comprehensive Cancer Center
- Sleep Medicine Center
- Heart Center
- Rheumatic Diseases Center
- Clinical Laboratory Center
- Breast Center
- Prostate Cancer Center
- Center of Regenerative Medicine
- Radiation Oncology Center
- Blood Purification Center
- Stroke Center
- Diabetes Center
- Robotic Surgery Center
- Allergy Center
- Clerical Support Office for Doctors
- Sports Medicine Center
- Reproductive Medicine Center
- Division of Radiology
- Diagnostic Pathology Department
- Surgical Center
- Anesthesiology and Pain Medicine Department
- Office of Medical Records
- After Hours Emergency Outpatient Department
- Central Supplies Department
- Blood Transfusion Department
- Clinical Engineering Department
- Nutrition Department
- Division of Genetic Consultation
- Radiotherapy Quality Management Office
- Liver Disease Patient's Support Room

Air Ambulance

"Doctor-Heli" stationed at Dokkyo Medical University Hospital

"Doctor-Heli" is an emergency medical services (EMS) helicopter that can quickly bring a doctor to an emergency. These helicopters provide a growing network of coverage throughout Japan. The dedicated emergency medical helicopters are equipped with state-of-the-art emergency equipment and medical supplies and staffed with emergency physicians and nurses. A Doctor-Heli is dispatched at the request of the fire department to provide initial treatment at the scene of an emergency and is able to transport the patient to a medical institution.



Why Doctor-Heli?

The advantage of an air ambulance is its mobility and speed.

With a flight speed of approximately 200 km/h, the Doctor-Heli can reach the scene of an emergency within 50 km of the base hospital in approximately 15 minutes after takeoff. This allows specialists to provide life-saving treatment at the emergency scene and facilitates rapid transport to medical facilities, thereby contributing to improved survival rates and reduced long-term effects.

Scope of operation

In principle, the entire area of Tochigi prefecture is served.

The Doctor-Heli takes off within 3 minutes of a dispatch request. And we can cover the entire prefecture within 20 minutes.



Dokkyo Medical University Saitama Medical Center

Address : 2-1-50 Minamikoshigaya, Koshigaya city, Saitama, JAPAN
Phone +81-48-965-1111

Located in Koshigaya city, Saitama prefecture, it is a commuter town near the Tokyo metropolitan area, Dokkyo Medical University Koshigaya Hospital (currently Saitama Medical Center) opened in June 1984.

The center has 928 beds, 28 departments, Emergency and Critical Care Center, Comprehensive Cancer Center, and Genetic Counseling Center addressing various concerns and worries related to genetics. Additionally, it houses an International Center for Reproductive Medicine that focuses on both male and female infertility, along with other facilities that cater to the needs of the local community.

It has an affiliated renal and preventive medicine center in front of Koshigaya Station. This center offers services such as dialysis, one-day physical examinations, and outpatient travel services. In addition to the basic examinations, the physical examinations provided include optional brain scans, arteriosclerosis tests, and bone density tests. Women can also receive mammography and uterine cancer screenings. The outpatient travel clinic provides information on infections in the destination country, vaccinations, and post-return health counseling. These services aim to ensure the safety of overseas business trips and travel.



Internal Medicine

Department of Diabetes, Endocrinology and Hematology
Department of Respiratory Medicine and Clinical Immunology
Department of Gastroenterology
Department of Cardiology
Department of Nephrology
Department of Neurology
Department of Pediatrics
Department of Psychiatry
Department of Dermatology
Department of Radiology
Department of General Medicine

Surgery

Department of Surgery
Department of Breast Surgery
Department of Orthopedic Surgery
Department of Cardiovascular Surgery
Department of General Thoracic Surgery
Pediatric Surgery Center
Department of Obstetrics and Gynecology
Department of Ophthalmology
Department of Otorhinolaryngology, Head and Neck Surgery
Department of Neurosurgery
Department of Urology
Department of Plastic and Reconstructive Surgery
Department of Emergency and Critical Care Medicine
Department of Intensive Care Medicine
Department of Anesthesiology
Department of Dentistry
Department of Rehabilitation Medicine

Koshigaya Clinic Affiliated to Dokkyo Medical University Saitama Medical Center

Comprehensive Medical Examination
Department of Travel Medicine
Dialysis Division

Central Department

Integrated Patient Support Center
Comprehensive Cancer Center
Child Development and Psychosomatic Medicine Center
Endoscopy Center
Blood Purification Center
Prostate Cancer Center
Genetic Counseling Center
International Center for Reproductive Medicine
Center of Medical Ultrasonics
Endovascular Therapy Center
Perinatal Medical Center
Center for Organ Transplantation
Radiation Oncology Center
Minimally Invasive Treatment Center
Pediatric Surgery Center
Neonatal Care Center
Department of Laboratory Medicine
Department of Radiology
Department of Pathology
Department of Operating Room Management
Department of Clinical Engineering
Blood Transfusion Department
Medical Records Department
Central Supplies Department
Nutrition Department
Emergency and Critical Care Center
Library
Pharmacy Department
Nursing Department

Others

Administration Department
Medical Safety Management Office
Department of Infection Control
Clinical Training Center
Clinical Research Support Office
Staff Health Center
Collaborative Research Center
Center of Medical Informatics
Research Center for Laboratory Animals, Saitama Branch Office
Career Support Center for Women Physicians

Dokkyo Medical University Nikko Medical Center

Address : 145-1 Moritomo, Nikko city, Tochigi, JAPAN
Phone +81-288-23-7000

Dokkyo Medical University Nikko Medical Center opened on April 1, 2006 as the University's third medical institution following the University Hospital and Saitama Medical Center. Subsequently, on January 1, 2023, a new building was completed and relocated to the Moritomo area of Nikko city, and a new four-story hospital equipped with a heliport was opened. In response to the needs of the local community, the hospital has 21 departments, including Ophthalmology and Emergency and General Medicine, and 199 beds, including four beds in the newly established High Care Unit (HCU). It also has a student/faculty/staff dormitory, Village Nikko, with 84 private rooms. As a key hospital in the international tourist city of Nikko, we provide a wide range of medical care, from acute regional medicine to rehabilitation, and also operate the Nikko Municipal Miyori Clinic and provides emergency medical care as a secondary emergency hospital in the Nikko area. In order to enhance disaster medical care, the hospital has been accredited as a regional disaster base hospital and a Tochigi prefecture DMAT-designated hospital. Furthermore, we were involved in the establishment of "Nikko Healthcare Net", the first regional medical cooperation promotion corporation in the northern Kanto region, and have participated since its establishment in April 2019. At the same time, we have made big efforts which include that the hospital has been accredited as a regional medical support hospital, and aims to enhance regional medical care as a core medical institution trusted by the local community.



Internal Medicine

Department of Respiratory Medicine
Department of Gastroenterology
Department of Cardiology
Department of Neurology
Department of Diabetes and Endocrinology
Department of Rheumatology and Clinical Immunology
Department of Cardiovascular Medicine and Nephrology
Department of Dermatology
Department of Radiology
Diagnostic Pathology Department

Surgery

Department of Surgery
Department of General Thoracic Surgery
Department of Cardiac and Vascular Surgery
Department of Orthopedic Surgery
Spine Center
Department of Urology
Department of Plastic, Reconstructive and Aesthetic Surgery
Department of Anesthesiology
Department of Ophthalmology
Department of Emergency and General Medicine
Department of Rehabilitation

Community Medicine Department

Department of Tourism Medicine
Miyori Clinic
Department of Medicine and Infectious Diseases

Central Department

Endoscopy Center
Cardiovascular Center
Clinical Laboratory Department
Radiology Department
Pathology Department
Emergency Department
Rehabilitation Department
Operating Room Management Department
Central Supplies Department
Clinical Engineering Department
Health Examination Department
Hemodialysis Department
Medical Records Office
Clinical Research Support Office
Common Laboratory
Nutrition Department

Others

Pharmacy Department
Nursing Department
Medical Safety Promotion Department
Infection Control Department
Regional Network and Admission/Discharge Support Center
Administration Department

Hot spring accommodation-type comprehensive medical check-ups

We also focus on preventive medicine and actively conduct "hot spring accommodation-type comprehensive medical check-ups" in collaboration with hotels in Kinugawa Onsen, as well as corporate medical check-ups. The surrounding area is home to the Nikko National Park, which includes the World Heritage Sites of Nikko Shrine and Temple, as well as prominent hot spring resorts such as Kinugawa, Kawaji and Yunishigawa, which are visited by a large number of tourists. The hospital therefore also plays a role as a base hospital that can provide safe medical care for tourists visiting the area.



COMPREHENSIVE RESEARCH FACILITIES FOR ADVANCED MEDICAL SCIENCE

RESEARCH CENTER FOR ADVANCED MEDICAL SCIENCE

RESEARCH CENTER FOR LABORATORY ANIMALS

CENTER FOR RESEARCH COLLABORATION AND SUPPORT

Division for Regenerative Medicine

We perform translational research on intractable diseases using state-of-the-art technologies such as patient-derived iPS cells and mass spectrometry imaging. We also address fundamental questions related to wound healing using mathematical modeling and simulation.

Division for Memory and Cognitive Function

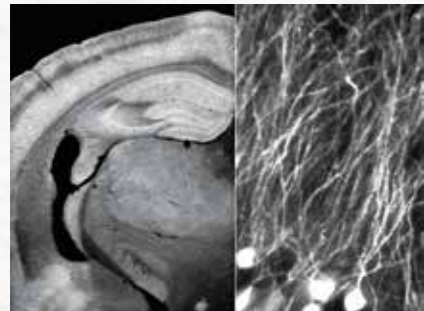
Our focus is to reveal the principles underlying memory and cognitive functions of the brain. Based on our works, we hope to propose novel diagnostic and therapeutic concepts for amnesia, addiction, and schizophrenia.

Division for Host Defense

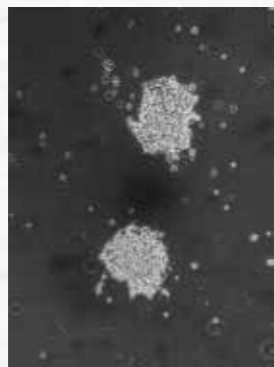
We are studying the functions of mucosal-associated invariant T(MAIT) cells, innate-like T cells, in cancer, viral infection, and asthma by using iPS cells and mice rich in MAIT cells.

Division for Smart Healthcare Research

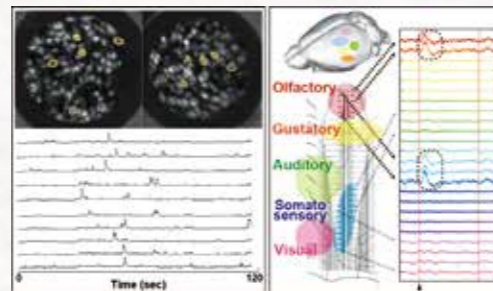
We are studying innovative communication technology and psychology in the settings of medical, welfare, and healthcare services using XR technologies (i.e. telemedicine).



Cognitive functions are exerted by coordinated neuronal activities in the brain (Left, mouse brain; Right, neurons).



iPS cell colonies from MAIT cells (two large masses of cells are found)



Multi-neuronal (left) and brain-wide (right) recordings to reveal principles for cognitive functions



VR treadmill system



Facilities of the Division for Technical Support

Research Center for Laboratory Animals

The Research Center for Laboratory Animals (RCLA) in DMU manages and supports in vivo research using laboratory animals, which is indispensable for medical research.

Division for Technical Support

We are providing research support for specimen preparation, tissue image analysis, cell culture, data measurement, and data analysis by field. In addition, the Specimen Management Office centrally manages research specimens.

Division for Research Promotion and Support

We are providing consultations and supports for epidemiology and statistical analysis for clinical study, and organize seminars on medical research, biostatistics, and other topics.

Division for Research Strategy

Our division strives to strengthen research capabilities by supporting research collaboration inside and outside our university.



An industry-academia collaboration product with a local company



The RCLA in Mibu campus



Seminars hosted by the Division for Research Promotion and Support



General breeding management of various laboratory animals



Providing learners with the opportunities to experience authentic English practice and forming deeper social ties with each other through English.



Providing support to faculty, doctors and nursing teachers with their English enquiries such as: help with academic papers, presentations, correspondence, etc.



PREMEDICAL SCIENCES

DEPARTMENT OF LANGUAGES AND HUMANITIES

English Language Section

German Language Section

Russian Language Section

French Language Section
Chinese Language Section
Literature Section

DEPARTMENT OF FUNDAMENTAL EDUCATION

Physics Section

Biology Section

Chemistry Section

Health and Sports Sciences Section

Psychology Section

Mathematics and Statistics Section

SUPPORT CENTERS

CENTER FOR EDUCATION SUPPORT

Division for Community-Based Medical Education

Division for National Qualification

Division for Medical and Nursing Education

CENTER FOR INTERNATIONAL COOPERATION

Laboratory of Tropical Medicine and Parasitology

Laboratory of International Epidemiology

Office of Germany-Japan Cooperation for Medical Research and Education

Office of International Affairs

CENTER FOR RADIATION RESEARCH AND MANAGEMENT

Radiation Management Office

Radiation Research Office

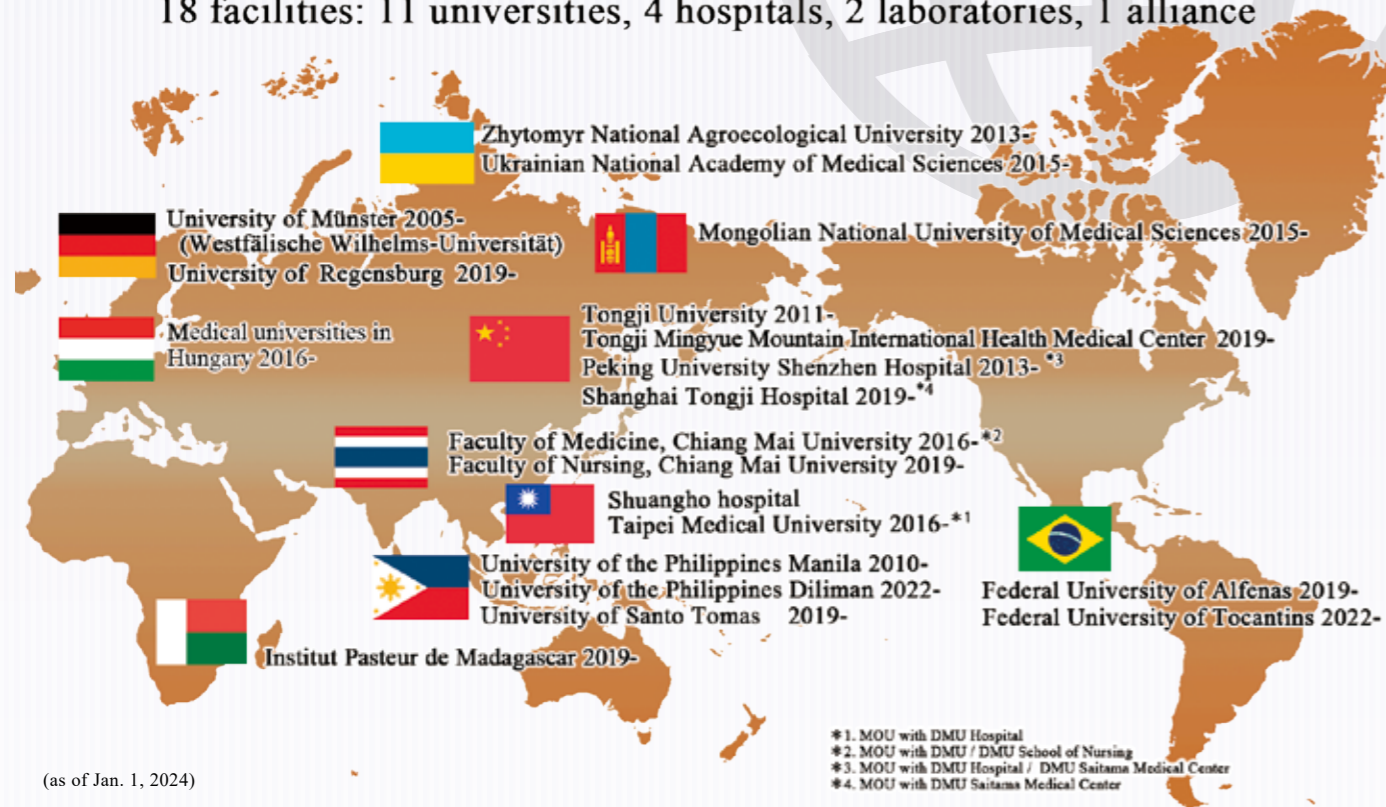
CENTER FOR INFORMATION AND COMMUNICATION TECHNOLOGY

International Exchange

INBOUND International Exchange

Academic Exchange Institutions

18 facilities: 11 universities, 4 hospitals, 2 laboratories, 1 alliance



Year	2014	2015	2016	2017	2018	2019	2020	2021	2022
Foreign Clinical observership Trainee	3	3	6	14	19	24	0	0	1
Foreign PhD Candidate	-	-	-	1	2	3	4	3	2
Foreign MD Trainee	-	-	8	11	4	5	0	0	2

Medical students, graduate students, medical doctors, and researchers from Germany, the Philippines, Mongolia, and other countries have visited DMU and DMU Hospital for clinical observership, fundamental medical research, and clinical research. Clinical observership and medical research are also accepted as credits by the dispatching universities. Additionally, our School of Medicine and School of Nursing actively have conducted Overseas Training Programs (OTPs) for DMU students in Germany, the Philippines, and the United States.

Furthermore, participating in an OTP may lead to future studies abroad or internships at foreign institutions or international organizations.



DMU accepts researchers, medical trainees and PhD students from overseas.

Based on academic exchange agreements, DMU has accepted many students from Germany, the Philippines, Hungary, and other countries for clinical observership. The Graduate School of Medicine has/had students from Mongolia and China. We also accept researchers and faculty from foreign research institutes and universities.



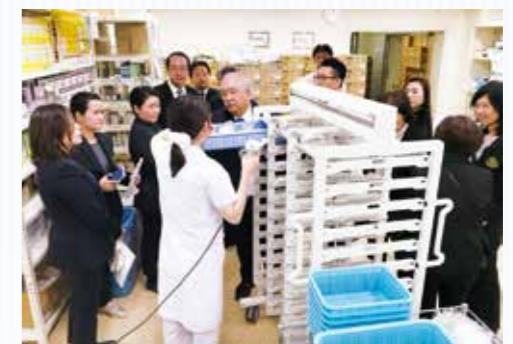
PhD student from Mongolia (Mongolian National University of Medical Sciences)



Meet and greet event at the School of Nursing (University of the Philippines)



Trainee / researcher (University of Szeged, Hungary)



A delegation from Thailand (Chiang Mai University)



Trainee / researcher (University of the Philippines)



A delegation from the Philippines (on-the-spot supervisors/mentors of the OTP)

OUTBOUND

International Exchange

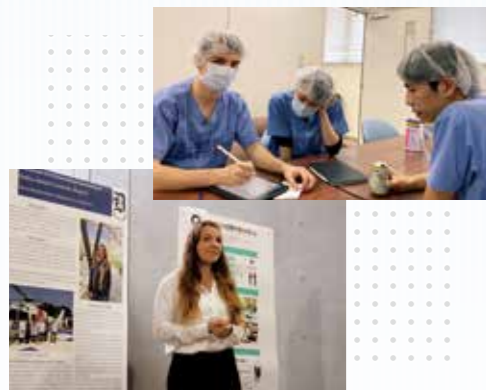
School of Medicine



Trainees medical students from the Philippines (University of Santo Tomas)



Trainee MDs from Mongolia (Mongolian National University of Medical Sciences)



Trainee medical students from Germany



Dokkyo Medical University Saitama Medical Center International Center for Reproductive Medicine Director: Kouhei Sugimoto

International Center for Reproductive Medicine in DMU Saitama Medical Center provides cutting-edge assisted reproductive technology including male infertility surgery. Additionally, we focus on psychosocial support through certified reproductive counselors. Moreover, we have a partnership with a company specializing in international tourism, and we offer assistance to patients with interpreters trained at our center. This center is one of the leading university hospitals in Japan with the system and human resources that can meet the needs of patients from overseas who need assisted reproductive technologies.



Nikko Medical Center Department of Tourism Medicine

The purpose of this department is to provide medical care, education, and research related to tourism medicine. In addition, the department will help to further promote the Nikko area.

- (1) Create a tourism plan with medical services.
- (2) Create rehabilitation programs in cooperation with balneotherapy facilities.
- (3) Promote medical tourism for foreigners.
- (4) Provide the elderly population in the Tokyo metropolitan area with information about accessing essential medical and nursing care services in Nikko and encourage relocation to the region.



The Philippines 2008~

University of the Philippines
Philippine Department of Health
WHO/WPRO



We offer Overseas Training Programs (OTPs) that provide opportunities to experience medical care in diverse settings. Participating students visit overseas medical institutions and receive in-depth lectures. Fieldwork is also conducted during the OTP in the Philippines. Through this field training, students are exposed to knowledge and skills that will broaden their perspectives, leading to further self-improvement upon returning home.



Germany

University of Münster 2004~
University of Regensburg 2023~



U.S.A.

Johns Hopkins University 2001~2003
City of Hope National Medical Center 2001~2019
University of California, San Diego (UCSD) 2004~2019



School of Nursing

The School of Nursing has set up "Practicing nursing from an international perspective" at the University of the Philippines Manila and is one of its diploma policies. The training began in 2014, and since then, 48 students, along with 9 faculty members, have received this specialized training. It is hoped that we can establish a program for training nurses at the University of Regensburg in Germany in the future.



A scene from hospital training at the Philippine General Hospital, Manila

DMU Hospital

We send faculty members to foreign institutions with which we have academic exchange agreements to share medical expertise. In July 2019, a nurse, an occupational therapist, and a dietitian were sent to the Tongji Mingyue Mountain International Health Medical Center to provide guidance.



Medical Cooperation



During the Overseas Training Program (OTP) in the Philippines, participating DMU students have an opportunity to observe the actual medical examination and treatment of diseases that are no longer observed in Japan. In addition, the DMU faculty member leading the OTP provides hands-on medical care not only to DMU students but also to medical students and young doctors in the Philippines. This has contributed to a mutual exchange between Japanese and Filipino medical students, and Filipino young doctors.



The international collaboration between DMU and Mongolia began in 2007 when DMU specialists participated in an overseas medical aid project organized by the Japanese Cleft Palate Foundation, a non-profit organization. Our mutual trust deepened through cooperation with Mongolian medical professionals in various parts of the country and in some cases, patients who could not be treated in Mongolia were transported to DMU Hospital for treatment.



We conducted, and plan to continue, health surveys in Ukraine and the Republic of Belarus, both affected by the Chernobyl nuclear power plant accident. In cooperation with research institutes in both countries, the main research topics include measuring radioactivity in food, internal exposure doses, and thyroid cancer screening.



In 2019, DMU signed a memorandum of understanding (MOU) with the Institut Pasteur de Madagascar in Antananarivo, Madagascar to collaborate with Madagascar scientists on schistosomiasis mansoni and schistosomiasis haematobia. This collaborative study was about surveillance and control of schistosomiasis in Madagascar, taking advantage of the fact that Japan is only the country that has done it.

School of Medicine

International Exchange Programs held online

The Covid-19 pandemic also affected student exchange programs with Germany, but thanks to the years of online exchanges, the adverse impact of hosting the exchange programs could be minimized. Our online exchange began in 2011 when Professor Alexander Mellmann from Westphalian Wilhelms University in Münster gave the first online lecture to students at the Mibu campus.

Beginning in 2021, Prof. Dr. med. Martina Müller-Schilling initiated a series of online lectures that fostered academic exchange between students and faculty from the University of Regensburg and their counterparts at DMU. These interactive lectures covered a range of topics, including "Early Gastric Cancer – A Japanese Perspective on Endoscopic Diagnosis and Treatment" and "Interprofessional Care for Patients with Liver Disease."



Lecture by Professor Dr. med. Alexander Mellmann from Münster



Lecture by Prof. Dr. med. Martina Müller-Schilling

Using various application software such as Skype and Google Drive, DMU students collaborated with Münster students to create a poster for the 6th International Influenza Meeting held in Münster. They gathered information from scientific publications, had discussions online, created a text, and finally presented it at the event.

While we hope that in-person exchanges will intensify as the pandemic is abating, we would also like to enhance online exchanges before students leave for overseas programs in order to make better use of their actual time abroad.

DMU and the University of the Philippines Manila (UPM) signed a Memorandum of Understanding (MOU) for academic exchange in 2010. Since the MOU was established, DMU has conducted joint research projects in the Philippines with various scientists, including UPM faculty. Furthermore, the MOU facilitated a DMU professor in providing advice to a UPM student through MD-PhD course for research for over a year. Subsequently, the DMU faculty member and five UPM professors collaborated on the supervision and review of this student's doctoral degree (PhD). This partnership has led to a comprehensive research collaboration, including degree reviews and the production of scientific papers.



A UPM PhD student's dissertation defense using Zoom. Above picture includes examiners from UPM and a DMU professor.

School of Nursing

Even after the Covid-19 pandemic, the school continues to be active in online exchanges with international institutions such as University of the Philippines College of Nursing (UPCN) and Faculty of Nursing, Chiang Mai University (CMU), Thailand, in order to help students develop an international perspective.



Online UPCN & DMU Exchange Program (2021/2022)

The agenda includes discussions on specific topics such as "How can we adapt and continue to learn as nursing students, even during the pandemic?" We plan to resume training at UPCN in March 2024. In preparing for this exchange meeting, we employed active learning, a method in which students actively think and learn. The students prepared themselves by participating in activities at the English Community Lounge (ECL), where facilitators provided assistance.

The Online International Exchange Program with UPCN on October 21, 2022

Main title: Impact of Covid-19 on nursing students

Subtitle: How they overcame the difficulties (sharing past experiences)

The nursing students would be able to...

1. Encourage them to contemplate their capabilities and potential contributions.
2. Encourage them to share their personal experiences and achievements while also identifying areas that require further attention or improvement.
3. Facilitate a clearer understanding of effective approaches to learning nursing science and practices while also recognizing the challenges that still need to be addressed.



Online pre-meeting for the Exchange (2022)

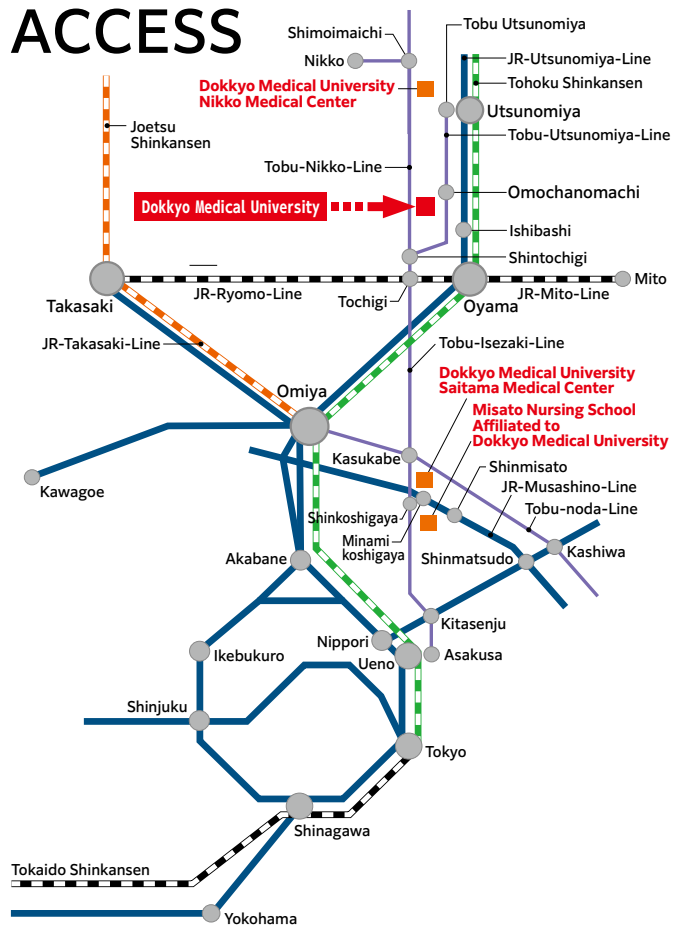


Active Learning, Summer Course 2021 at the ECL



Online CMU & DMU Student Exchange Program via Zoom Meeting (2021)

ACCESS



by Train

Tobu-Utsunomiya Line

Get off at Omochanomachi Station, take West Exit.
3 minutes by hospital bus or 10 minutes by walking.

JR Utsunomiya Line

Get off at Utsunomiya Station, take West Exit.
10 minutes by city bus to Tobu-Utsunomiya Station for Omochanomachi Station.

JR Utsunomiya Line

Get off at Ishibashi Station, take North Exit.
15 minutes by taxi.

by Car

- From Tohoku Expressway via Tochigi Tsuga JCT
2 minutes from Mibu Interchange on Kita Kanto Expressway
- 30 minutes from Tochigi Interchange on Tohoku Expressway
- 30 minutes from Kanuma Interchange on Tohoku Expressway

